

Advice : HSL-230314130538-442 DO NOT ADVISE AGAINST

Your Ref: 23/500899/OUT

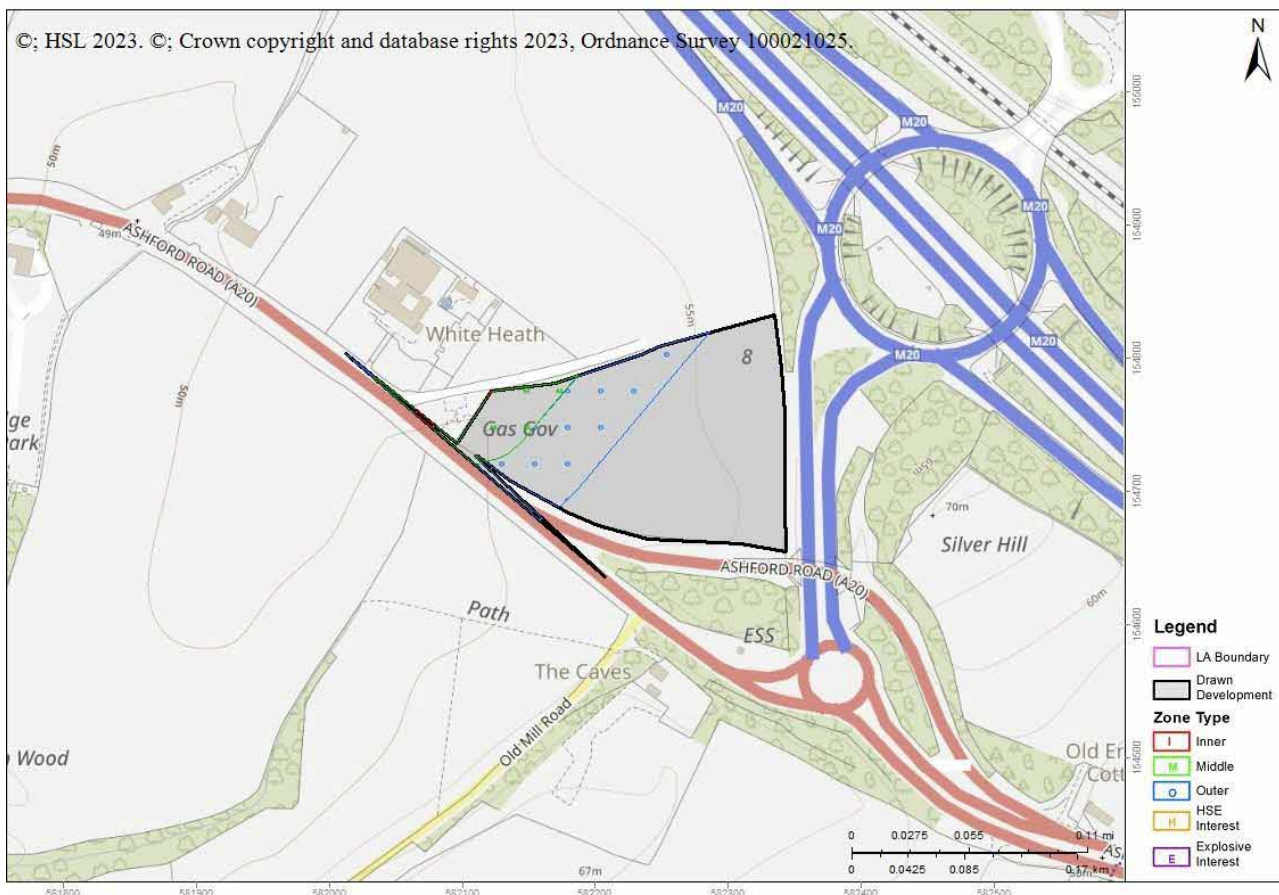
Development Name: Land North Of The A20, Ashford Road, Hollingbourne, Kent

Comments: Outline application for the erection a building for storage and distribution (Class B8 use) with a floorspace up to 10,788sqm (Gross External Area), ancillary offices, associated car parking, HGV parking, landscaping and infrastructure (All matters reserved except for access).

Land Use Planning Consultation with Health and Safety Executive [Town and Country Planning (Development Management Procedure) (England) Order 2015, Town and Country Planning (Development Management Procedure) (Wales) Order 2012, or Town and Country Planning (Development Management Procedure) (Scotland) Regulations 2013]

The Health and Safety Executive (HSE) is a statutory consultee for certain developments within the Consultation Distance of Major Hazard Sites/ pipelines. This consultation, which is for such a development and is within at least one Consultation Distance, has been considered using HSE's planning advice web app, based on the details input on behalf of Mid Kent .

HSE's Advice: Do Not Advise Against, consequently, HSE does not advise, on safety grounds, against the granting of planning permission in this case.

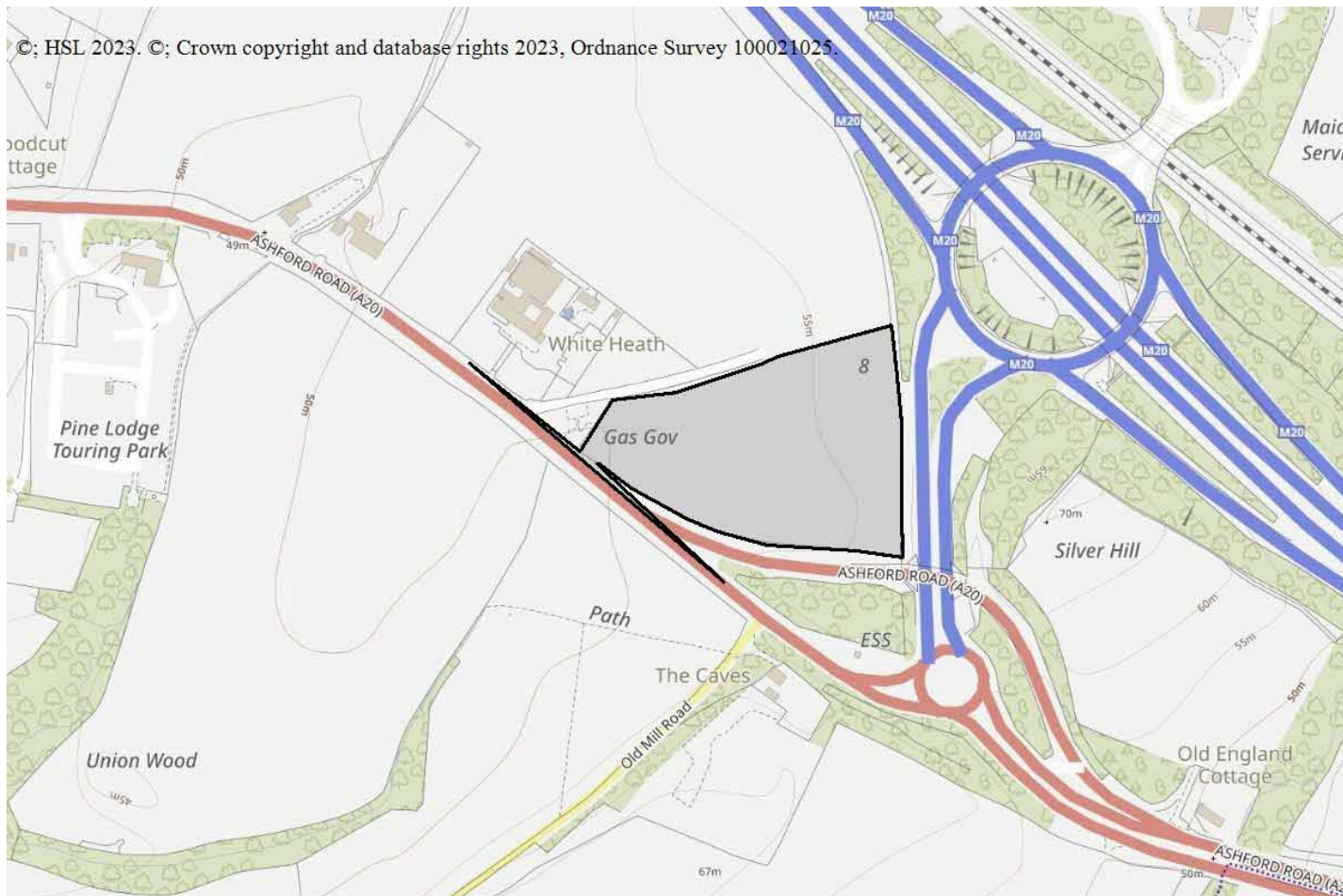


Breakdown:

Workplaces : Do Not Advise Against

Is it a workplace specifically for people with disabilities, e.g. sheltered workshops? No

Are there 100 or more occupants in any individual workplace building (that lie partly or wholly within a consultation distance)? Yes



Pipelines

- 7099_1370 Southern Gas Networks

As the proposed development is within the Consultation Distance of a major hazard pipeline you should consider contacting the pipeline operator before deciding the case. There are two particular reasons for this:

- The operator may have a legal interest (easement, wayleave etc.) in the vicinity of the pipeline. This may restrict certain developments within a certain proximity of the pipeline.
- The standards to which the pipeline is designed and operated may restrict occupied buildings or major traffic routes within a certain proximity of the pipeline. Consequently there may be a need for the operator to modify the pipeline, or its operation, if the development proceeds.

HSE's advice is based on the situation as currently exists, our advice in this case will not be altered by the outcome of any consultation you may have with the pipeline operator.

This advice report has been generated using information supplied by [REDACTED] at Mid Kent on 14 March 2023.

Note that any changes in the information concerning this development would require it to be re-submitted.

